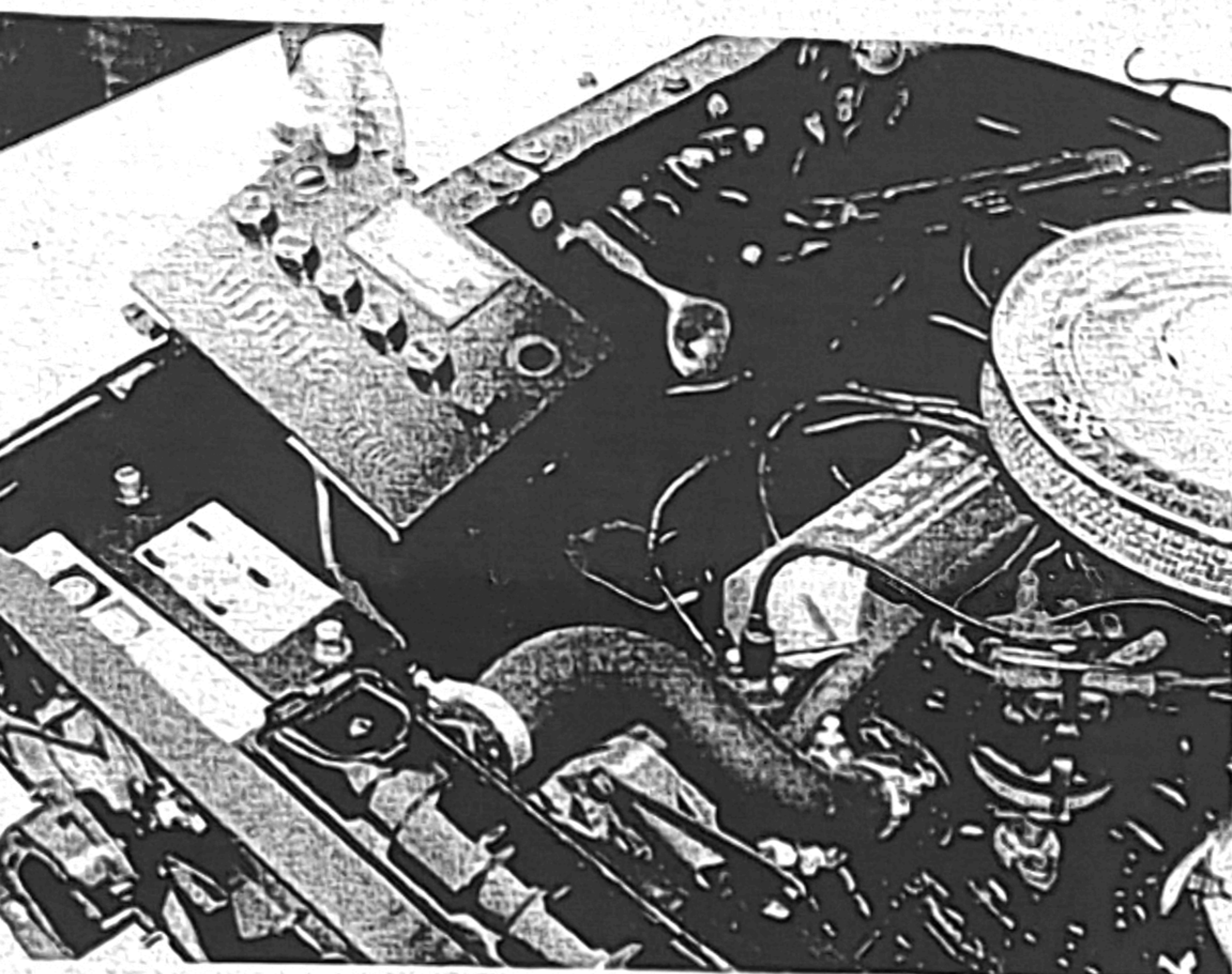


This battery cover is designed to be used with any maintenance free flat top battery \*\*24/60 series with original terminal location for a GM battery and a 24F60 battery for the Autolite battery covers. If your battery is not a flat top battery but has the correct post location you can purchase terminal extenders from your battery top dealer making virtually any battery usable as long as the post location is original.



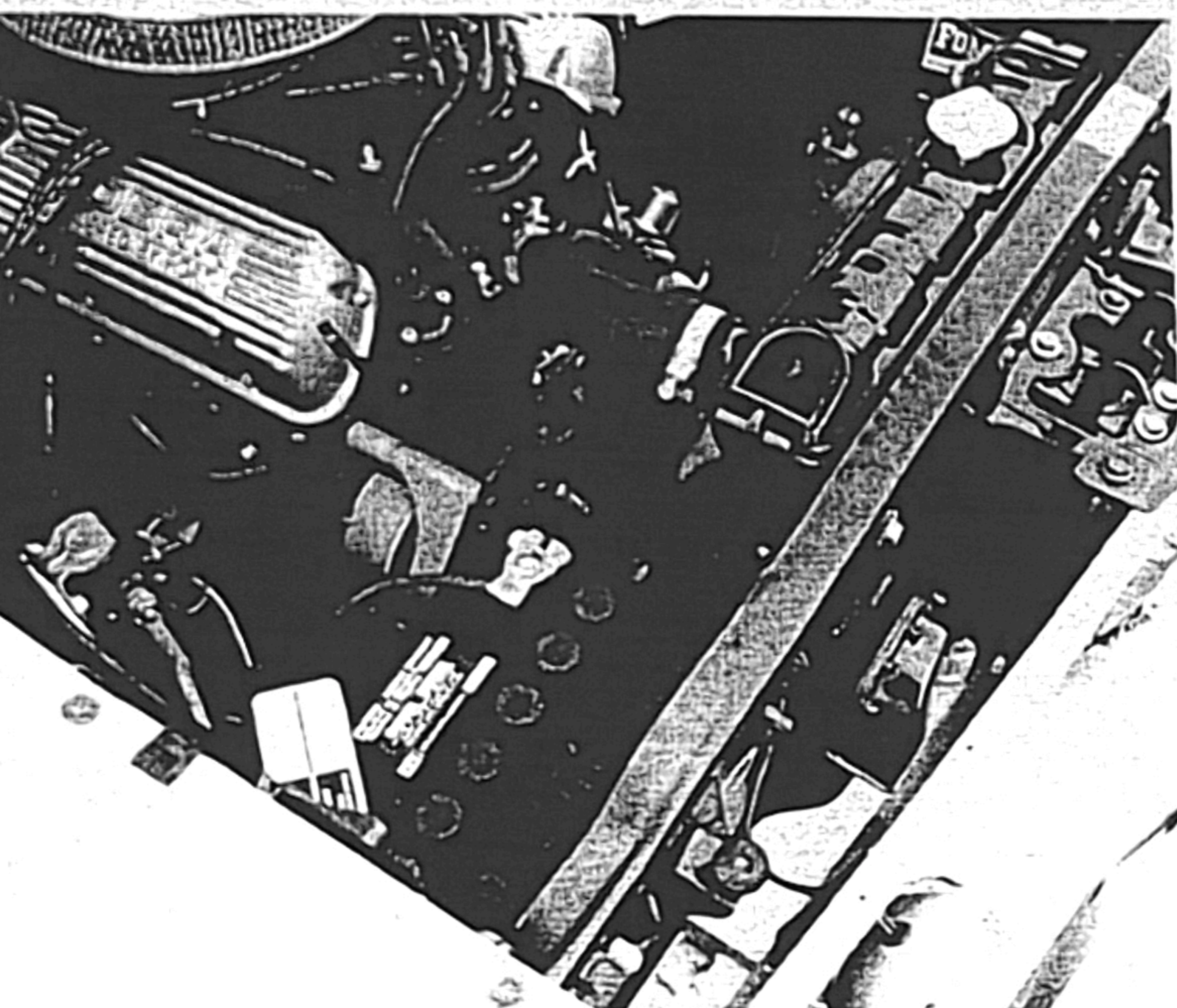
## INSTALLATION

- ❖ Disconnect both battery cables from the terminals
- ❖ Simply lay your battery cover over the top of the battery

**CAUTION:** always make sure that you are connecting the positive cable to the actual battery positive terminal. This is also important for charging and boosting.

- ❖ Reconnect cables to the correct battery terminals

**AUTOLITE COVERS:** place your original style warning tag over the positive terminal before you reconnect the battery cable.



- ❖ If your maintenance free battery is not black, you may want to use any good quality paint, and paint the sides of the battery for a more original look